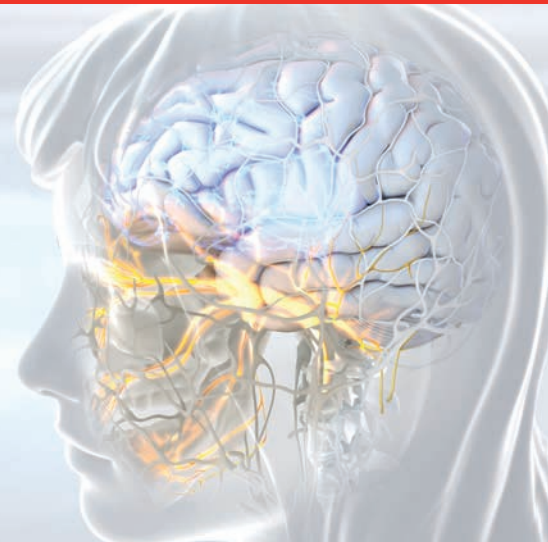


# Predict, Prevent, Conquer: Beyond Head Pain

Join us online during the EAN Virtual Congress

**ROOM VIENNA**

**Saturday, 23 May 2020 | 12:15 – 13:15 (CEST)**



## LEARNING OBJECTIVES

- Explore new data in CGRP mAbs
- Identify elements of productivity and impact to patient
- Recognize the ideal clinical approach based on real world evidence
- Determine ways to bridge clinical trial data to clinical practice

## AGENDA

- 12:15 – 12:25** Chairperson Welcome and Introductions  
**Cristina Tassorelli, MD, PhD (Italy)**
- 12:25 – 12:40** A Current Understanding of the Onset and Efficacy of CGRP mAbs  
**Michel Lantéri-Minet, MD, PhD (France)**
- 12:40 – 12:55** CGRP mAbs Efficacy Measured Over Time: Weekly and Monthly Persistence  
**Dagny Holle-Lee, MD, PhD (Germany)**
- 12:55 – 13:10** The Impact of CGRP mAbs on Work, Family, and Social Life  
**Christian Lucas, MD, PhD (France)**
- 13:10 – 13:15** Panel Discussion, Questions and Answers  
**All faculty**

## FACULTY



**Cristina Tassorelli, MD, PhD (Chairperson)**

Professor and Chair of Neurology, Department of Brain and Behavioural Sciences and Director of the Neurology Residency Program, The University of Pavia. Director, Headache Science Centre – “C. Mondino”, National Neurological Institute Pavia, Pavia, Italy



**Michel Lantéri-Minet, MD, PhD**

Medical Director, Department of Pain CHU Nice and FHU InovPain University Côte Azur, Nice, France



**Dagny Holle-Lee, MD, PhD**

Professor of Neurology, Headache and Pain Specialist, Head of the West German Headache Center, Department of Neurology, University Hospital Essen, Essen, Germany



**Christian Lucas, MD, PhD**

Neurologist and Doctor in Neurosciences, Pain Assessment and Treatment Department, Lille University Hospital, Lille, France

Speakers are subject to change.

This content has been approved consistent with French rules. You have to report Lilly product related AE/PC as required by local laws and regulations in your country. For any AE occurring in France for a Lilly product commercialized in France, you can declare on <https://www.lilly.fr/fr/medicaments/declarer-un-effet-indesirable/>, for any PC occurring in France for a Lilly product commercialized in France, you can declare by email at [FR\\_Paris\\_Reclamations@lilly.com](mailto:FR_Paris_Reclamations@lilly.com)

PP-LN-FR-0036 April 2020